

D.

HISTORY OF THE ELKRIDGE SCHOOL

Dear to the hearts of older Elkridge residents is the school on the cover.

The history of the public school in Elkridge goes back as early as 1830 when first records pinpoint a school on the road from Furnace to Railroad. In July of 1872, \$400 was appropriated by the legislature to provide a new school at Elkridge Landing. By 1880 this school had an assistant teacher, indicating that it had two rooms. In 1900 Charles McCauley, school trustee, declared the building - which had been rented from Melville Methodist Church - was unfit. The church agreed to repair the building if a long term lease could be arranged. In 1911 one of the rooms in this school was closed and the older children walked to a new school which had been opened in Upper Elkridge. The building was used again in 1922 for a high school, with only one room functioning. In 1924 the school was permanently closed and the land and building sold to Roger Laynor, who converted it into apartments.

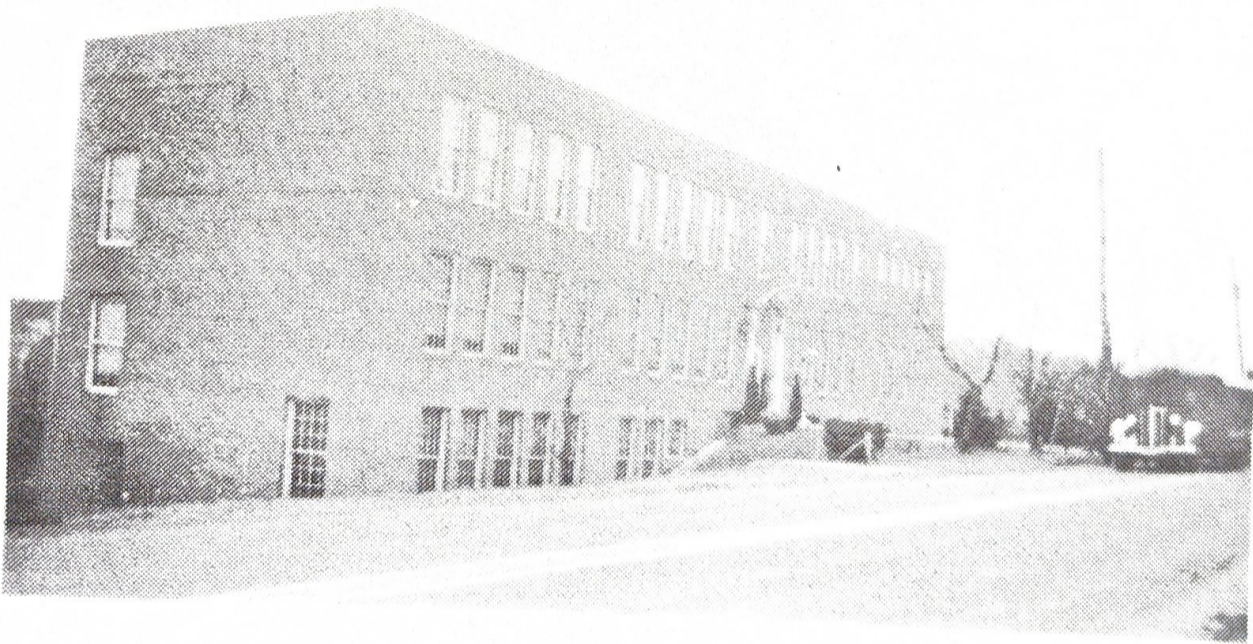
The school replacing the one in The Landing was built on the left side of the Baltimore-Washington Turnpike (going toward Washington, D. C.) just beyond the present intersection of Montgomery Road on land purchased from Daniel Murray and subsequently sold to Everhart Hartke. In June, 1912 this school and lot were both sold to John Hartke by the Howard County School Board.



In 1909, due to the deterioration of the above school, land was purchased from Sydney and Bertha Earp on the north side of the turnpike. A four-room school was built there by contractor J. Riley, which opened in 1910. This is the building shown on the cover, so we are today commemorating the 75th anniversary of the founding of this building.

In 1924 a contract was awarded to Chapman Riley for an addition of four rooms. The attendance grew and in 1929 another addition of two rooms was built by J. Kinlein, contractor. This provided for use as a combined elementary and high school. Crowded classrooms necessitated the installation of a portable classroom building which was moved to Elkridge from Florence. Many are the recollections of present day villagers who huddled around the old pot-bellied stove which heated that room in winter.

The success of the Elkridge school having been established, a contract was given to Carstrand Engineering to erect a modern new building across the turnpike on land which had been purchased for this use and which had been for several years used as playing fields for athletic activities. (Who will ever forget the old Rally Days at Ellicott City?) The new school opened as a high school in 1936. That also is the anniversary we are celebrating tonight -- a 50th year birthday!



It went on to varied usages with the passage of time, increase in attendance, provisions for bus transportation, and the need to fit into the overall plans of the Howard County School Board.

Dear to all former students are remembrances of teachers, principals, and schoolday pals. This year marks the third observance of a reunion for graduating classes from Elkridge High. The first, in 1984, at the Heritage Society's first dance, was the 52-year

anniversary of the class of 1932.
Last year, the 50year reunion of the
class of 1935, and this year the class
of 1936.

Growing up in Elkridge fifty years
ago before the days of bus transporta-
tion was a real adventure. Most social
life centered around school and church
activities. People related to those
around them on a one-to-one basis as a
general rule. A graduating class of
twelve in 1932 seemed perfectly normal,
whereas in 1986 it is unbelievable.
But it all made for deep roots in the
community. Paths separate and lead far
apart but childhood memories linger and
nostalgia always brings one back to re-
live times that were simpler and to re-
new friendships that are everlasting.

Long live the Elkridge School!

Flower Peddler

ARRANGEMENTS FOR ALL OCCASIONS
FLOWERS BY WIRE



1305 FRANCIS AVENUE BALTIMORE, MARYLAND 21227
(301) 242-8133

DENISE SMALLWOOD - Owner